

Sonata



People's expectation toward individual mobility requires more than just a convenient means of transportation. The old understanding of cars has become outdated. A car represents individuals' lifestyles, and it became an integral part of their lives. At the same time, the automobile industry has experienced seismic change. Hyundai Motor Company has grown rapidly to become one of the largest automakers, backed by world class production capability and superior quality. We have now reached a point where we need a qualitative approach to bring bigger ideas and relevant solutions to our customers. This is an opportunity to move forward and we have developed a new brand slogan that encapsulates our willingness to take a big leap. Led by our new slogan and the new thinking underlying it, we will become a company that keeps challenging itself to unlock new possibilities for people and the planet.



Hyundai Motor Company
<http://worldwide.hyundai.com>
GEN. RHD 1610 ENG. ID-KM

Copyright © 2016 Hyundai Motor Company. All Rights Reserved.

Design, esthetics, emotion, and confidence

VISIBLE



Strength, security, power, and reassurance

INVISIBLE

**THE NATURAL EVOLUTION
OF PERFECTION**

THE SONATA: FLUIDIC SCULPTURE, EVOLVED

Elegance, dynamics, and esthetics. If the previous Sonata defined Fluidic Sculpture, the latest model is a natural development of that philosophy: Fluidic Sculpture 2.0. The new model is one of a kind, setting a new benchmark for mid-sized sedans.



HID HEADLAMPS



RADIATOR GRILLE

ATTENTION TO DETAIL

Improvements have been made one step at a time. Curved, sculptural bodywork gives the car a modern, classy look. Simplicity and style define the exterior of the car.



18" ALLOY WHEELS



REAR COMBINATION LAMPS

INNER FORCE: OUTER BEAUTY

Understanding the essence of what a car should be was the priority of the Sonata's designers. To emphasize its strength and grace, they accentuated its forms and lines. In doing so, they brought out the mark of true beauty: confidence.



VISUAL PERFECTION

The Sonata has been taken to the next level. From the sweep of its roof, to its stable proportions, to its solid bumpers, it is an object of perfect symmetry.



PARTITIONED ENGINE COMPARTMENT LAYOUT

The engine compartment has been designed with an eye for harmony as each unit is positioned next to one another for optimum connectivity. The result is as visually and emotionally pleasing as every other aspect of the car.





DUAL FULL AUTO AIR CONDITIONING



SUPERVISION CLUSTER

COMPLETE CONTROL AT EVERY TOUCH

From the driver's seat, the interior feels both reassuring and intimate. The horizontal dashboard layout creates a feeling of stability and refinement. To keep your attention on the road ahead, the cluster and audio system are placed parallel with your eye line.



COMFORTABLE HAND MOVEMENT, MINIMUM EYE MOVEMENT



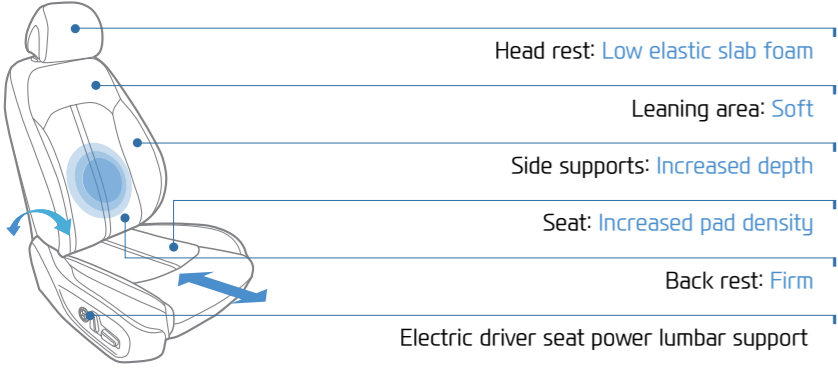
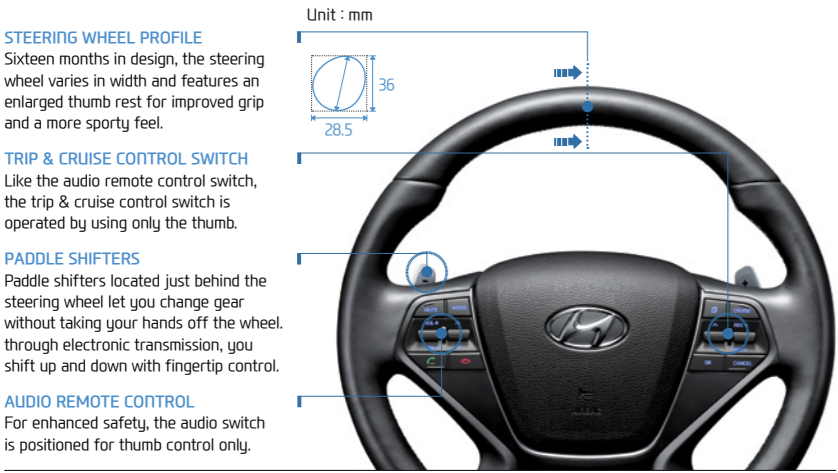
6-SPEED AUTOMATIC TRANSMISSION



T-SHAPED CENTER FASCIA
Designed with the help of a motion simulator, the T-shaped center fascia is driver-oriented from top to bottom. Switches, screens, and controls are positioned just where your hand, eyes, and fingertips expect them to be.

ACTIONS AND REACTIONS

The Human-machine interface (HMI) has been developed to provide intuitive two-way communication with the car. Simplified ergonomics are combined with carefully considered input and output controls, letting you stay in close sensory touch with every vehicle function.



INNOVATIVE DRIVER SEAT

The driver seat is the result of studies in body pressure distribution. Innovations in design, materials, and manufacturing provide exceptional comfort and reduce fatigue during long-distance driving.





**CLASSY BUT NOT FLASHY
SLEEK BUT NOT SUPERFICIAL**

Beauty can be seen on the surface, but it comes from within.
The refined stance and balance of the Sonata's exterior reflects its
inner strength. It is stylish but not showy, elegant but not extravagant.



Design, esthetics, emotion, and confidence

VISIBLE



Strength, security, power, and reassurance

INVISIBLE

**BUILT STRONG FROM
THE INSIDE OUT**

51%

ADVANCED HIGH-STRENGTH STEEL (AHSS)

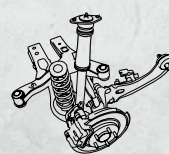
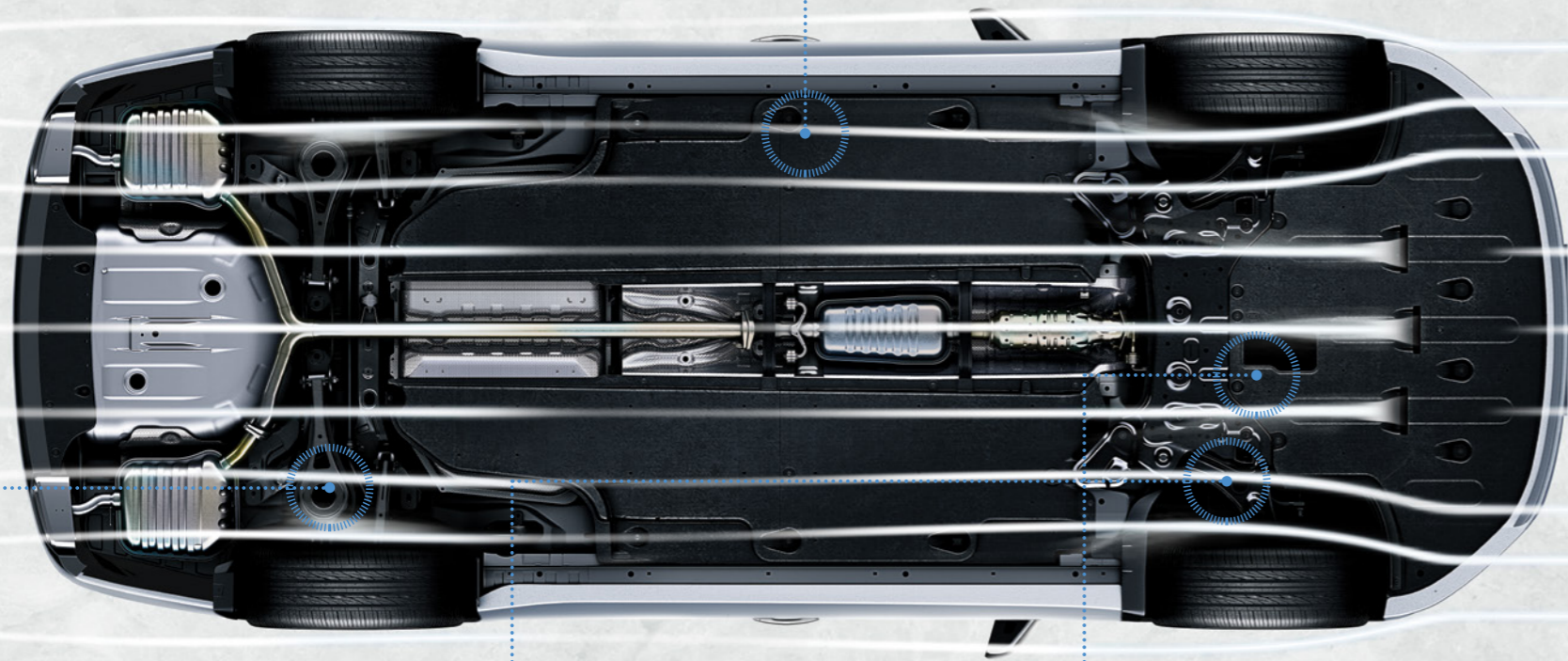
More than half (51%) of the body of the Sonata is comprised of Advanced high-strength steel (AHSS). AHSS is twice as strong as ordinary steel plate, and maximizes torsional and bending stiffness. The Sonata's structure increases energy absorption, distributes any collision forces evenly, and minimizes distortion.

THE DRIVING EXPERIENCE COMES FIRST

The engineering of the Sonata is subtle, but each of its parts enhances the joy and passion of driving. Its suspension, steering, and soundproofing have all been designed with the simple pleasure of the drive in mind.

FLAT UNDERBODY

The underbody is flat to ensure optimum aerodynamics.



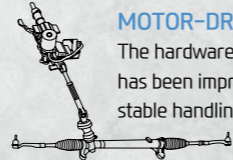
MULTI-LINK REAR SUSPENSION

With a dual lower arm, the rear wheel geometry has been optimized. The arm evenly distributes lateral force and enhances stability during high-speed driving and turning.



McPHERSON STRUT FRONT SUSPENSION

The McPherson strut front suspension features newly-designed wheel geometry and increased bearing strength. It is highly stable while braking, and enhances driving performance and steering response.



MOTOR-DRIVEN POWER STEERING (MDPS)

The hardware and software of the MDPS system has been improved to ensure smooth steering, stable handling, and eliminate shaking.

BECAUSE SAFETY AFFECTS EMOTIONS TOO

When a car is built for safety, drivers feel secure. The Sonata's technology is hidden, and so are its safety features. They're ready and waiting for the instant they're needed. You and your passengers are always protected.



2014 IIHS Top Safety Pick+
2015 HYUNDAI SONATA

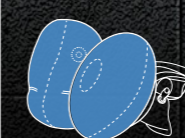
Applies only to optional front crash prevention models. Applies to models sold in the U.S.

Specifications may vary by countries. The Insurance Institute for Highway Safety (IIHS) is a U.S. non-profit organization funded by auto insurers, dedicated to reducing the number of motor vehicle crashes.



FRONT AND REAR CURTAIN AIRBAGS

Improves protection of occupants' heads in case of side collision.



DRIVER AND PASSENGER AIRBAGS

Driver and passenger seats are equipped with airbags designed to reduce head and neck injuries in the event of a head-on collision.

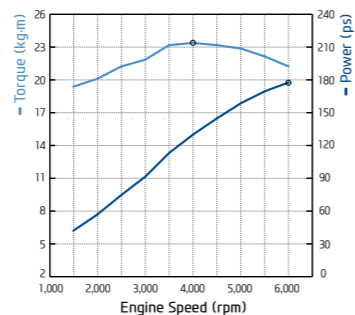


FRONT SIDE AIRBAGS

Improved deployment of side airbags helps protect the chest and pelvis more effectively.

THE HEART BECOMES STRONGER

If the Sonata's designers understand your heart and mind, the car's engineers understand your driving. It's why the car's engines are designed to produce the most torque in the low to medium engine revolution range: the one most often used in real life. The result is a dramatically enhanced acceleration response. Combined with technologically advanced transmission and impressive fuel economy, you have the driving performance you seek.



2.4 MPI GASOLINE ENGINE
Powerful but also quiet and responsive, this unit delivers a maximum 23.3 kg·m of torque at 4,000 rpm.

MAX. POWER

178^{ps}

MAX. TORQUE

23.3^{kg·m}



2.0 MPI GASOLINE ENGINE
The lightweight and responsive 2.0 MPI gasoline engine delivers a maximum 20.0 kg·m of torque at 4,000 rpm.



DRIVE MODE CONTROL SYSTEM
This lets you choose from three different driving modes—normal, sports, and eco—depending on the steering feel you require and to suit different driving conditions.



6-SPEED AUTOMATIC TRANSMISSION
The 6-speed automatic transmission provides high-precision response, silky-smooth shifts, and outstanding durability.



6-SPEED MANUAL TRANSMISSION
Now a 6-speed unit, the manual transmission has been engineered to facilitate optimum driving performance.



TECHNOLOGY THAT PUTS YOU OUT IN FRONT

There are many facets of driving. The open road promises freedom and different terrains to tackle, and of course, other drivers to be aware of. The Sonata prepares you for whatever comes next with its full range of technologically advanced systems. Its supreme engineering makes sure that driving is always convenient and safe.



BLIND SPOT DETECTION (BSD)

The Blind spot detection (BSD) perceives vehicles in the blind spot between your rear-view and outside mirrors. It also emits a warning when a vehicle approaches quickly from the rear.



During high-speed driving, stability is crucial. Aerodynamics is a vital contributor to stability. Here, the Sonata proves that a studied, elegant body shape doesn't just provide stunning looks, but also reduces drag. With the hood tip lowered and minimal tire visibility, the car simultaneously hugs the road while delivering enhanced fuel efficiency.



AUTO CRUISE CONTROL

Auto cruise control lets you set and maintain your desired speed. It's perfect for long road trips, because it prevents you from accidentally passing the speed limit. At the same time, you can let your feet relax while saving fuel.

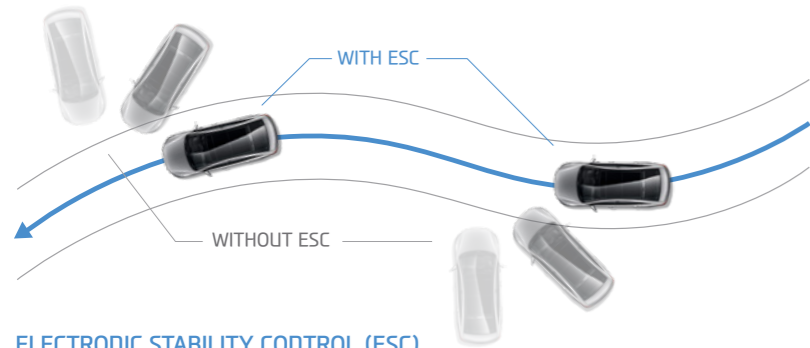


HILL-START ASSIST CONTROL (HAC)

The Sonata's Hill-start assist control (HAC) makes life easier. It frees drivers from worries about starting uphill by stopping the car from rolling backwards.

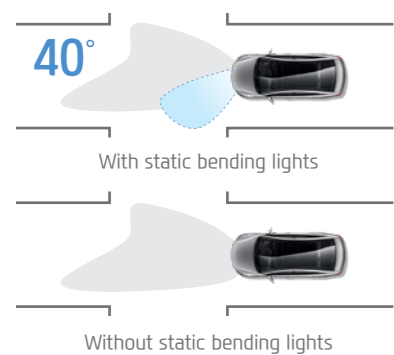
FROM HERE TO THERE

As the road stretches out before you, the adventure also depends on effective driving security measures. The addition of a reduced brake pedal ratio has enhanced braking responsiveness. Meanwhile, for optimal braking and cornering performance, the tires on the 18" wheels feature a unique tread pattern.



ELECTRONIC STABILITY CONTROL (ESC)

The Electronic stability control (ESC) continually senses steering wheel movement in relation to wheel rotation, controlling the engine, braking system, and steering during sudden braking and turning. By automatically applying braking force independently to each wheel, it lets you maintain control and avoid skidding.



STATIC BENDING LIGHTS (SBL)

See better on a curve with Static bending lights (SBL) that increase visibility when turning. It provides illumination for previous blind spots when making turns for greater visibility.

* Static bending light is available for HID headlamp.





A WORK OF EXCELLENCE

On the outside: style, looks, and confidence.

On the inside: strength, energy, and stability.

The Sonata echoes your personality. It's time to step inside.

A CLOSE UP ON THE SPECIFICATION

The Sonata's specification has been considered in depth, but of course the finishing touches are supplied by you. With the ability to choose from a range of technologically advanced and convenient features, the final package becomes a highly personal one. From head lamps to wheels, from door scuffs to muffler, you complete the picture.



A. Radiator grille

The radiator grille makes a statement that is bold, forthright and uniquely Hyundai. Hexagonal and three-dimensional, it adds a touch of glamour while blending with the bodywork.



B. High-intensity discharge (HID) headlamps

High-intensity discharge (HID) headlamps illuminate the road with a crisp, intense light. Their slim design forms a natural continuation of the car's characterful belt-line molding.



D. Fog lamps

The upgraded design of the fog lamps adds on to their already dynamic good looks. Stylish, yet practical, they provide much-needed visibility in foggy conditions.



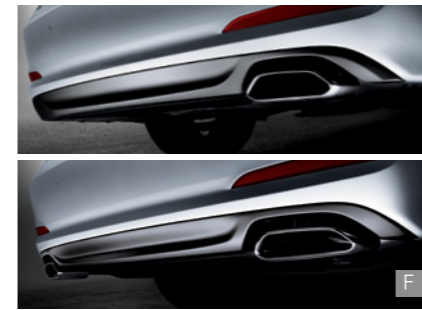
C. Puddle lamps

This is a car with a human touch and it is more evident in its puddle lamps. Welcoming and inviting, they light the way for you and your passengers.



E. Welcome light door handles

Lights on the inside of the door handles allow you to easily locate the handles in the dark, while giving a touch of elegance.



F. Single muffler & Dual muffler

The aggressively shaped muffler tail trim provides a sense of high performance. The dual version multiplies this feeling twice over.



J. 16" steel wheels

Extremely strong but also stylish, 16" steel wheels come as standard.



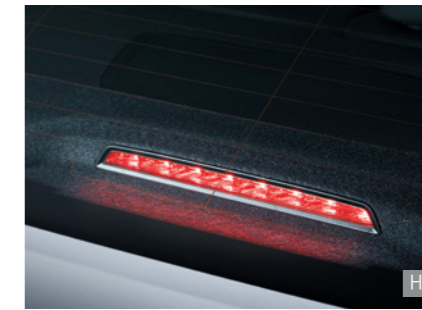
G. Door scuffs

A feature found in luxury cars, door scuffs protect the car's sills from scratches and marks caused by footwear.



K. 16" alloy wheels

Lightweight, robust 16" alloy wheels feature an attractive five split-spoke design.



H. High-mounted stop lamp

A high-mounted stop lamp, located in the eye line of drivers traveling behind, alerts them when you brake and helps ensure they keep their distance.



L. 17" alloy wheels

Sporty 17" alloy wheels provide a racy appearance, while their design also cuts down on road noise.



I. Rain sensor & aero blade wipers

A sensor automatically controls the speed of the wipers by sensing the amount of rainfall. Aero blades prevent the wipers lifting at high speed.



M. 18" alloy wheels

For the ultimate in performance and prestige, you can opt for 18" alloy wheels.

Smart trunk system

Stand near the trunk with the smart key for about 3 seconds, and the trunk lid automatically opens. This feature allows you to place bags in the trunk without putting them down.



COMFORT AND CONVENIENCE, TAILORED TO YOUR STYLE OF DRIVING

The interior of your car reflects your tastes and outlooks. Want comfort from the moment you turn on the ignition on cold days? Heated seats and a heated steering wheel will take care of it. Need more privacy? Electrically operated rear curtains make it happen. Every feature blends function with luxury, expressing what's important to you.



A. Panorama sunroof

What can be better than throwing open the sunroof on a fine sunny day? The wide panorama sunroof lets in light and sunshine, providing a wonderful feeling of space.



B. Front & rear seats warmer

Front seats feature 3-stage heated seat cushions and heated backrests. Rear seat cushions are also heated.



C. Front seat ventilation system

The front seat ventilation system has also been improved, with the air temperature now around 5.5% cooler than before.



D. Rear air ventilation

Rear air ventilation means passengers in the back can enjoy a pleasant air temperature.



E. Seat folding system

The rear seats fold down in a 6:4 configuration, offering plenty of flexibility when it comes to carrying your bags and other cargo.



F. Auto defogging system

The auto defogging system uses a sensor to automatically de-mist the windscreen when it fogs up, clearing the glass quickly.



J. Overhead console

A console positioned at head height just behind the rear-view mirror is the ideal place to keep your sunglasses.



G. Heated steering wheel

In addition to providing the reassuring grip of real leather, the heated steering wheel keeps your hands warm on cold days.



K. Connectivity (USB, AUX)

Plug your mobile device into the AUX & USB socket, and you can play your favorite tunes from stored music files.



H. Manual rear door curtains

Rear seat side curtains can be pulled down when you desire privacy or just want to block out the light.



L. Integrated memory system (IMS)

The Integrated memory system (IMS) memorizes driver seat positions and outside mirrors, convenient for when two people share one car. Each setting can be returned to the original one with one touch.



M. Electric parking brake (EPB)

A simple operation of a switch turns the parking brake on and off.

Smart key

The Sonata automatically detects your smart key when you approach. To unlock the car, all you have to do is press a button on the door handle.

INTERIOR TRIMS



Beige two-tone



Brown two-tone



Gray two-tone



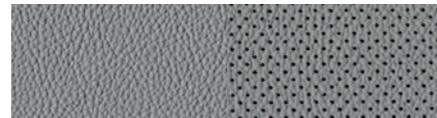
Black one-tone



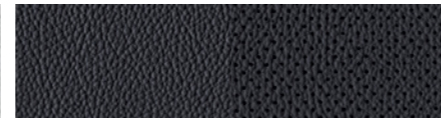
Beige leather seat



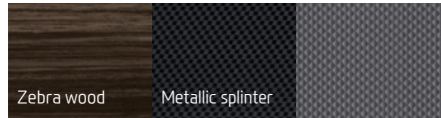
Brown leather seat



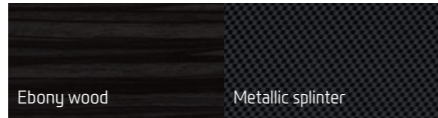
Gray leather seat



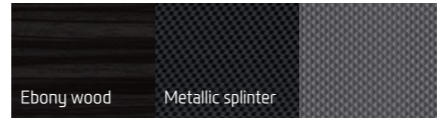
Black leather seat



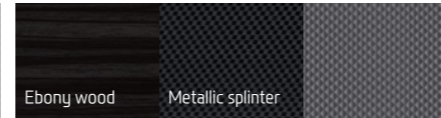
Wood grain Insert film Metallic paint



Wood grain Insert film

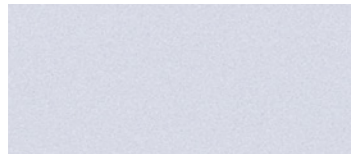


Wood grain Insert film Metallic paint

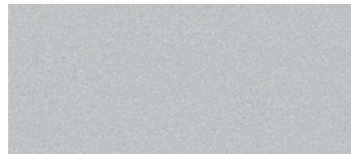


Wood grain Insert film Metallic paint

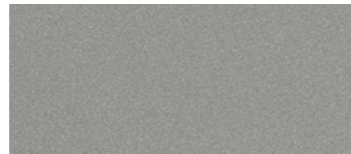
EXTERIOR COLORS



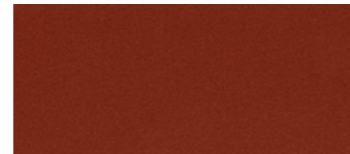
White cream WC9



Ion silver P9V



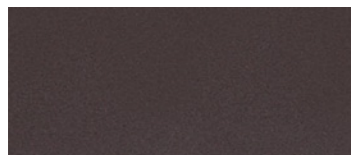
Luminous beige UB9



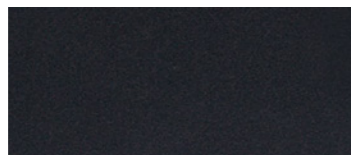
Phoenix orange PA7



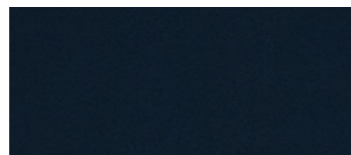
Valentine red V9R



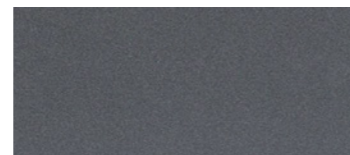
Shade bronze S9C



Phantera gray PG9



Gran blue PU9



Runa gray U9G



Midnight black PB9

SPECIFICATIONS

		Type	2.4 MPI gasoline engine	2.0 MPI gasoline engine	
Dimensions (mm)	Exterior	Overall length (mm)	4,855		
		Overall width (mm)	1,865		
		Overall height (mm)	1,475 (1,485 : High suspension)		
		Wheel base (mm)	2,805		
		Wheel tread (mm)	Front	16" steel wheels 1,614 / 16" alloy wheels 1,614 / 17" alloy wheels 1,602 / 18" alloy wheels 1,597	
		Rear	16" steel wheels 1,621 / 16" alloy wheels 1,621 / 17" alloy wheels 1,609 / 18" alloy wheels 1,604		
	Interior	Head room (mm)	Front	1,025	
			Rear	975	
		Leg room (mm)	Front	1,155	
			Rear	905	
Shoulder room (mm)		Front	1,470		
	Rear	1,435			
Engine	Engine type	DOHC with Dual CVVT			
	Displacement (cc)	2,359	1,999		
	Max. Power (ps / rpm)	178 / 6,000	157 / 6,200 (EURO-2*)	154 / 6,200 (EURO-3/4/5*)	
	Max. Torque (kg-m / rpm)	23.3 / 4,000	20.0 / 4,000 (EURO-2*)	19.8 / 4,000 (EURO-3/4/5*)	
Brakes	Dual-diagonal, split-circuit, power-assisted braking system with electronic brake force distribution (EBD)				
Suspension	Front / Rear	McPherson strut type / Multi-link			
Tire	205 / 65 R16, 215 / 55 R17, 235 / 45 R18				
Fuel tank (liter)	70				

- The above values are results from internal testing and are subjected to change after validation.
- Some of the equipment illustrated or described in this catalog may not be supplied as standard equipment and may be available at extra cost.
- Hyundai Motor Company reserves the right to change specifications and equipment without prior notice.
- The color plates shown may vary slightly from the actual colors due to the limitations of the printing process.
- Please consult your dealer for full information and availability on colors and trims.

*European emission standard.

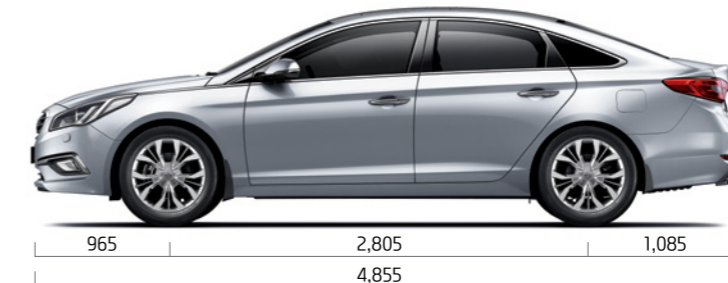
DIMENSIONS

Unit : mm



1,597*

1,865



965

2,805

1,085

1,475**



1,604*

*Wheel tread • 16" alloy wheel (Front/rear) : 1,614/1,621 • 17" alloy wheel (Front/rear) : 1,602/1,609 • 18" alloy wheel (Front/rear) : 1,597/1,604
 ** Overall height • High suspension : 1,485